

An aerial photograph of Dana Point Harbor Marina, showing the harbor basin, surrounding residential and commercial buildings, and the coastline. The water is a deep blue, and the land is a mix of green and grey.

DANA POINT HARBOR Marina Improvement Project

Subsequent Environmental Impact Report Scoping Meeting

December 8, 2007

11:00 am to 1:00 pm

An aerial photograph of a residential development, showing a grid of streets, numerous houses, and a canal or road running through the area. The image is overlaid with a semi-transparent blue filter.

Scoping Meeting Objectives

- **Provide first opportunity for public participation in the overall CEQA process**
- **Allow the public to identify environmental issues to be analyzed in the SEIR**

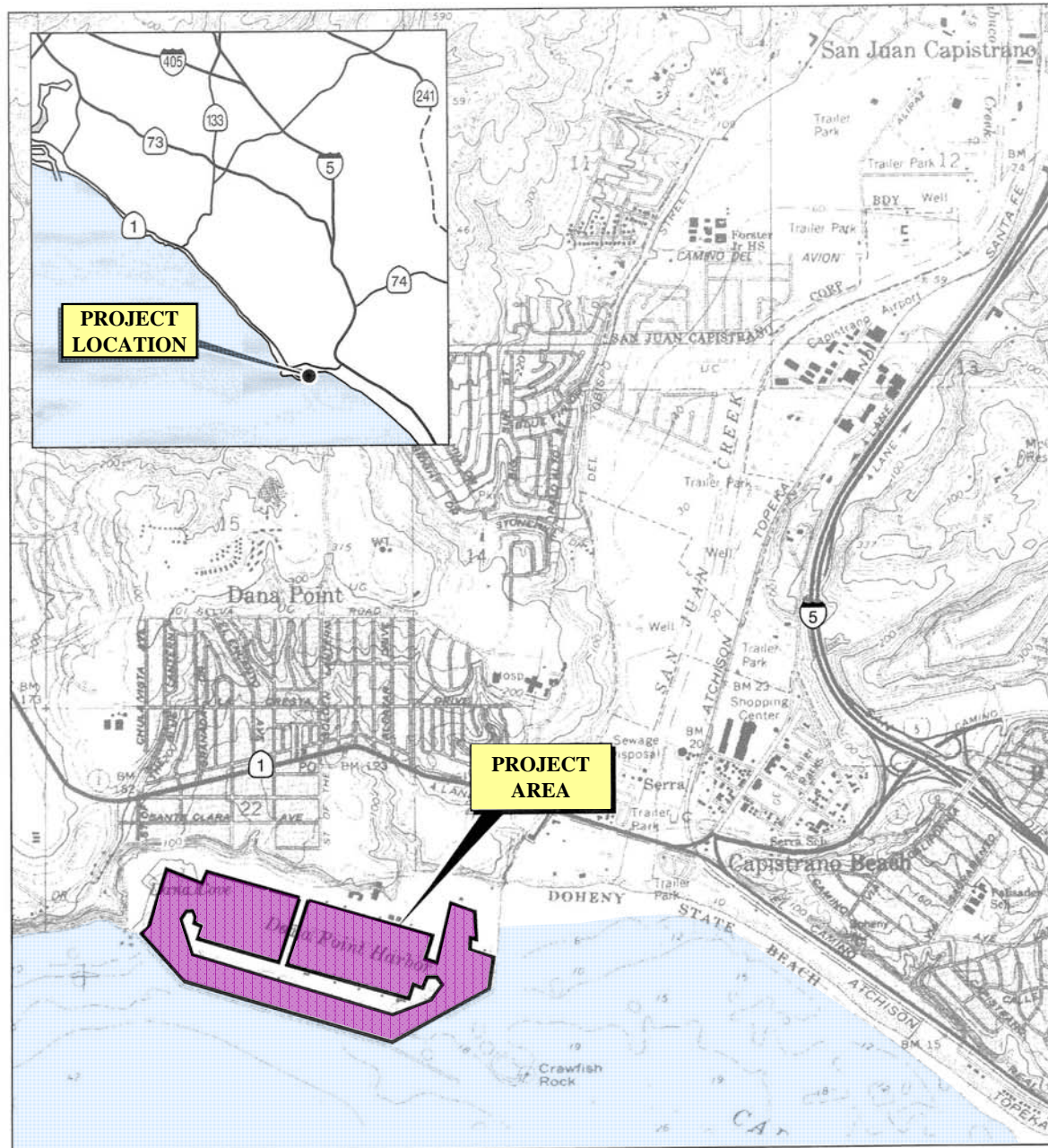


FIGURE 1

LSA

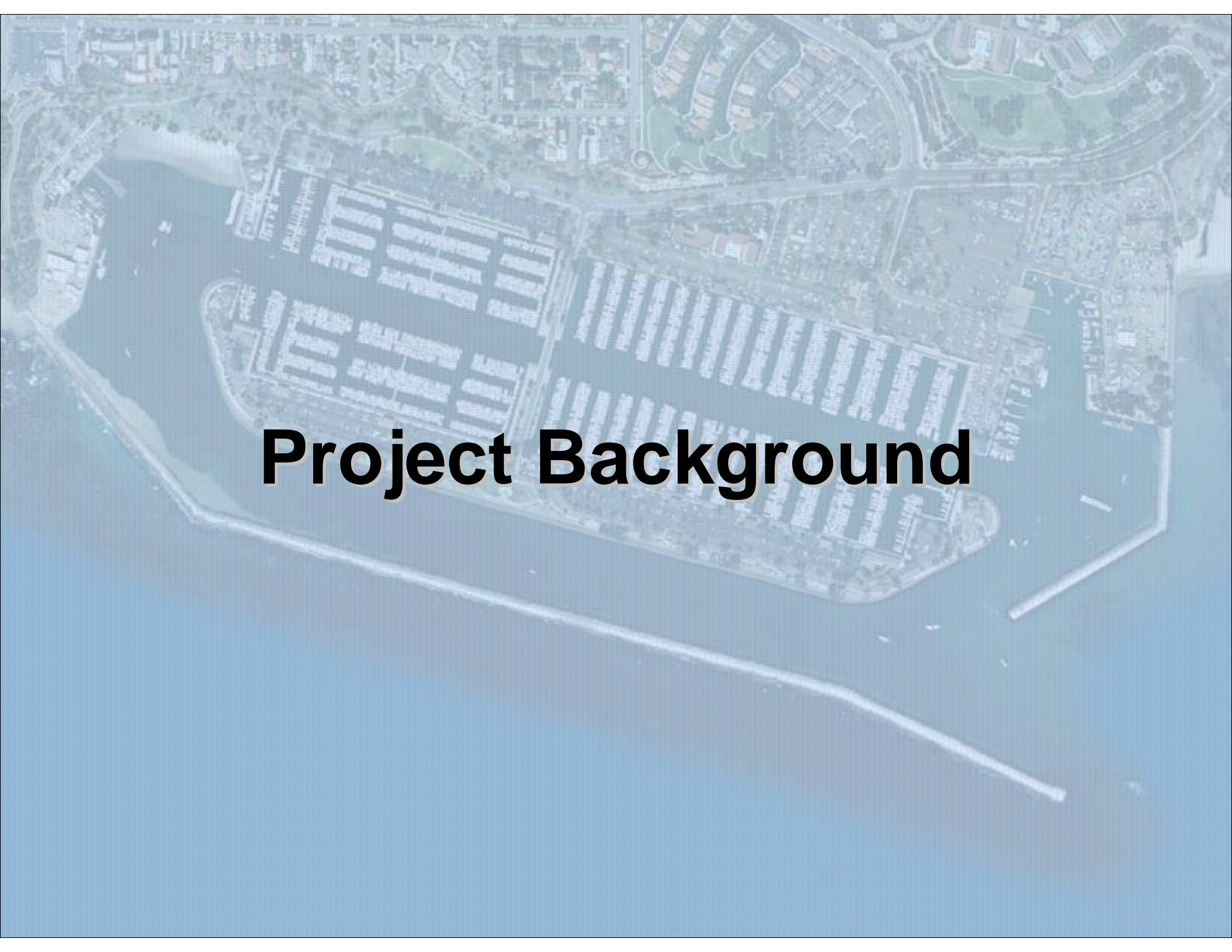


SOURCE: USGS 7.5' Quadrangle, "Dana Point, Calif."

I:\CAE0601\G\LocationII 10_07.cdr (11/13/07)

Dana Point Harbor Marina Improvement Project

Project Location

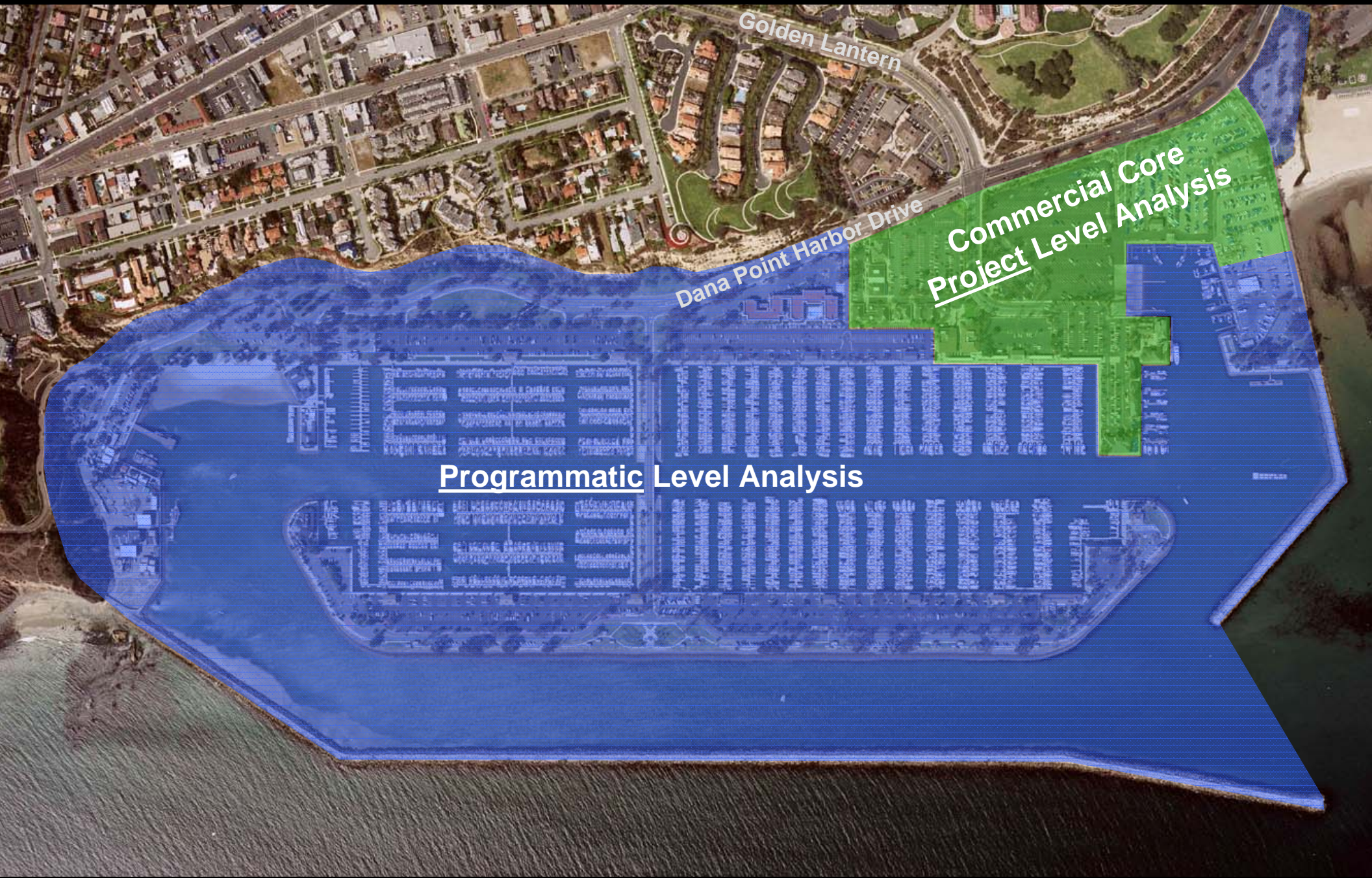


Project Background

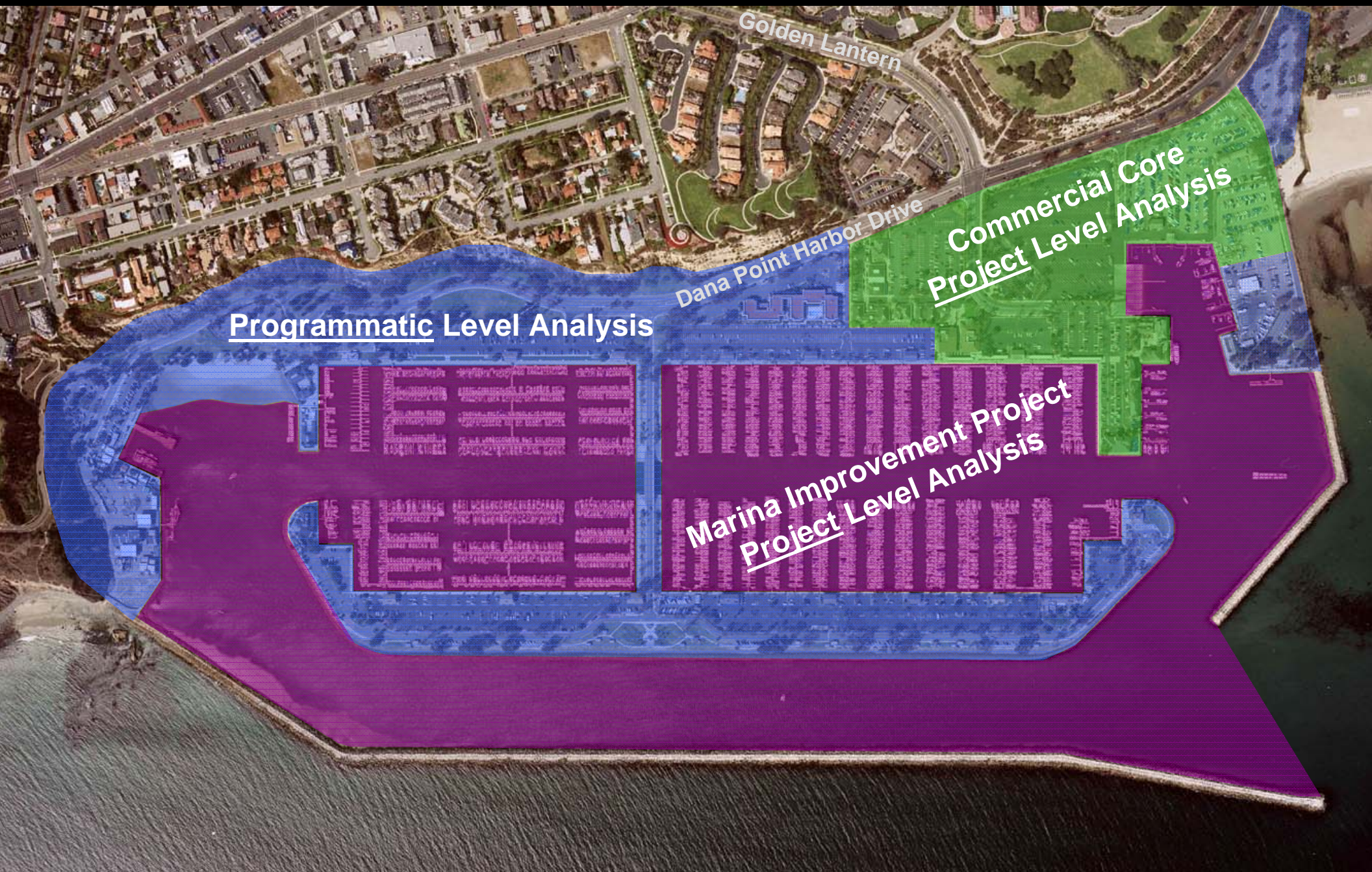


Dana Point Harbor Revitalization Project Program EIR

- **Program EIR**: Covers many actions, or long-range plans characterized as one large project
- **Subsequent EIR**: Addresses subsequent project activities in light of a previously certified EIR
- **Level of Analysis** – Programmatic vs. Project



Program EIR No. 591 (Commercial Core)

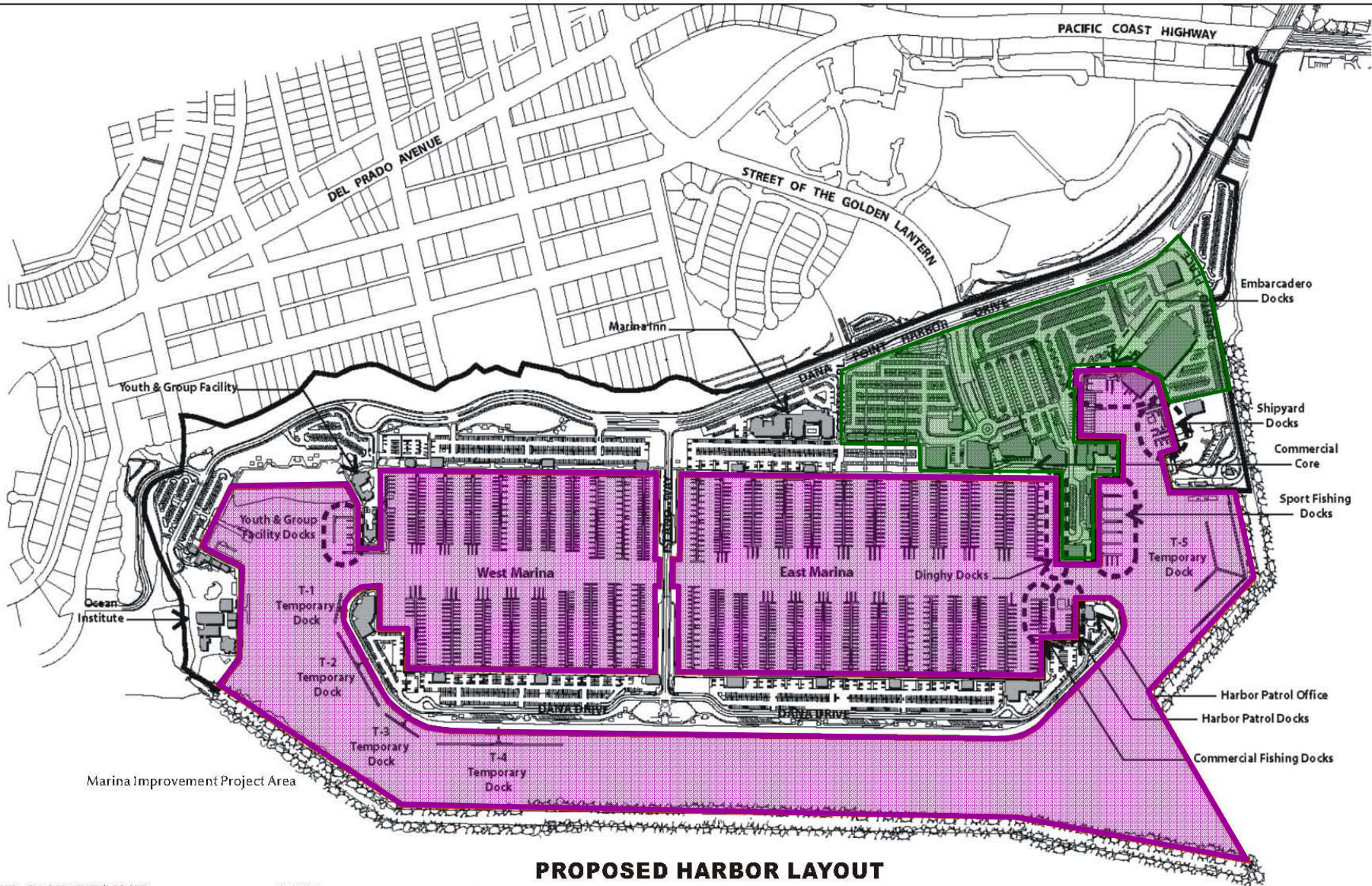


Programmatic Level Analysis

Commercial Core
Project Level Analysis

Marina Improvement Project
Project Level Analysis

Subsequent EIR (Marina Improvement Project)



PROPOSED SLIP COUNT 2035
 PROPOSED AVERAGE SLIP LENGTH 33.96'

**PROPOSED HARBOR LAYOUT
 DANA POINT HARBOR MARINAS**

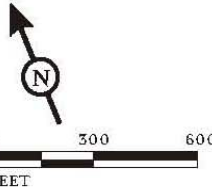
FIGURE 3

LSA

LEGEND

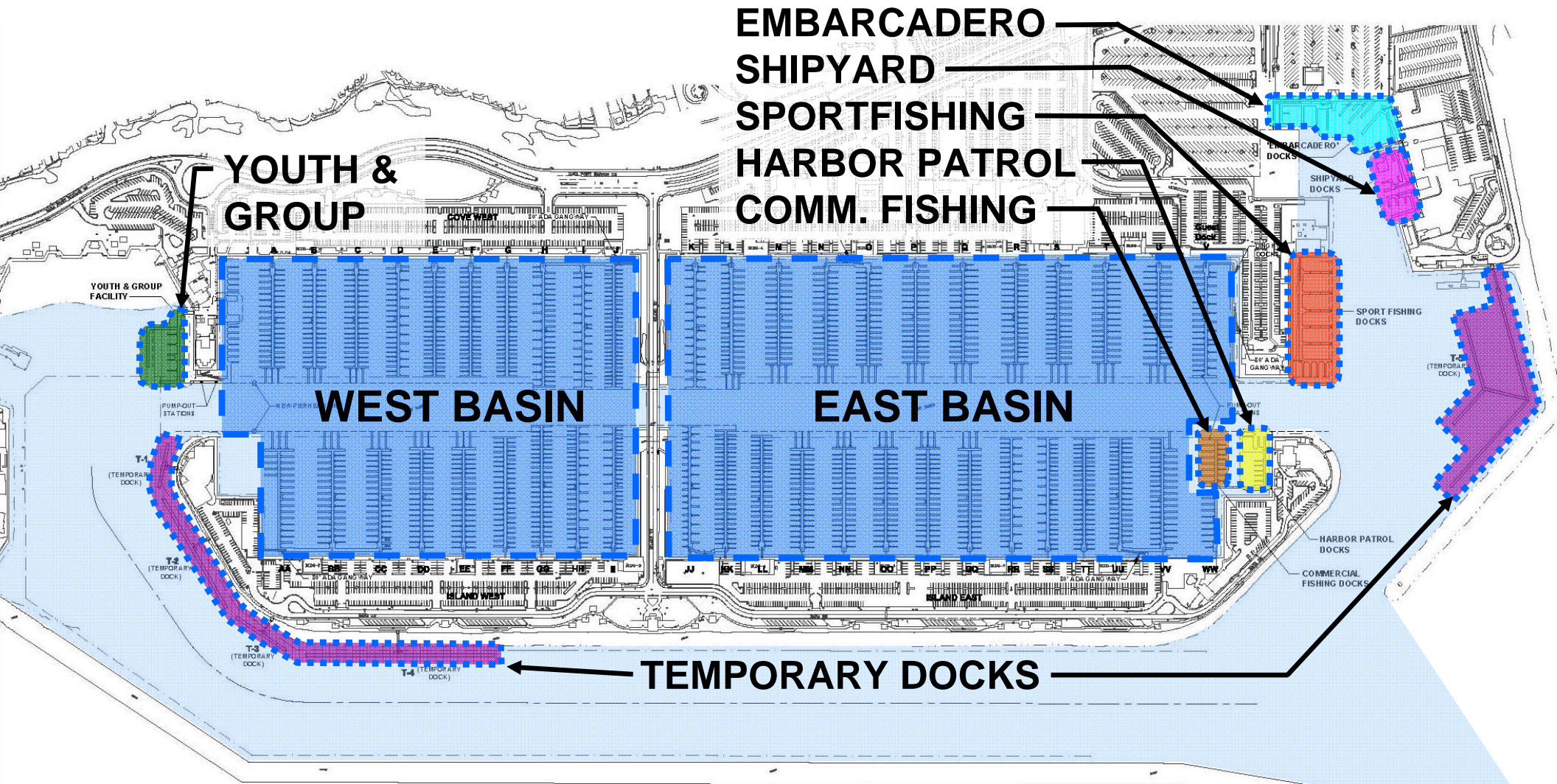
- Boundary
- Marina Improvement Project Area

NOTE: Landslide areas are shown in accordance with the Dana Point Harbor Revitalization Plan and District Regulations Land Use Plan.



Dana Point Harbor Marina Improvement Project

Proposed Harbor Layout



EMBARCADERO
SHIPYARD
SPORTFISHING
HARBOR PATROL
COMM. FISHING

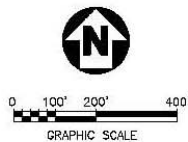
YOUTH & GROUP

WEST BASIN

EAST BASIN

TEMPORARY DOCKS

DANA POINT HARBOR MARINAS
 LAYOUT 2C.2 w/ Channel Encroachment
 (34' Avg.)
PROPOSED LAYOUT



SEIR Process



You are Here

Opportunities for Public Comment

Environmental Topics to be Addressed in the SEIR

- **Aesthetics**
- **Air Quality**
- **Biological Resources**
- **Geology and Soils**
- **Hazards and Hazardous Materials**
- **Hydrology and Water Quality**
- **Land Use**
- **Noise**
- **Recreation**
- **Transportation and Traffic**
- **Utilities**

Subsequent EIR (SEIR) Schedule

Published NOP	November 27, 2007
NOP Comment Period Closes	January 2, 2008
Draft SEIR Public Review Period Begins	Spring 2008
Draft SEIR Public Review Period Closes	45 days after Draft EIR is released to the public
Complete Final SEIR	Summer 2008
SEIR Certification	Late Summer 2008

Stay Informed!

- **Check for updates at the Dana Point Harbor Revitalization Plan website:
www.dphplan.com**
- **Contact us at:
Orange County Dana Point Harbor Department
24650 Dana Point Harbor Drive
Dana Point, California 92629
(949) 923-2236**

Review Locations

Environmental documents for the project will be available throughout the project for public review at the following locations:

1. **www.dphplan.com**
2. **County of Orange Dana Point Harbor Department Office**
24650 Dana Point Harbor Drive, Dana Point, CA 92629
3. **Dana Point City Hall**
33282 Golden Lantern, Dana Point, CA 92629
4. **Dana Niguel Library**
33841 Niguel Road, Laguna Niguel, CA 92629
5. **San Clemente Library**
242 Avenida Del Mar, San Clemente, CA 92672
6. **San Juan Capistrano Regional Library**
31495 El Camino Real, San Juan Capistrano, CA 92675
7. **Orange County Public Library**
30341 Crown Valley Parkway, Laguna Niguel CA 92677

An aerial photograph of a residential development, possibly a golf course or resort area, featuring numerous houses and a large body of water in the foreground. The text "Public Comment" is overlaid in the center.

Public Comment